

microDOT PLUS

WWW.PME.COM

**HIGH ACCURACY AT AN
AFFORDABLE PRICE,
MAXIMIZING VALUE FOR
BUDGET-CONSCIOUS USERS.**

KEY FEATURES:

COMPACT DESIGN FOR FLEXIBLE INTEGRATION:

Optimized for easy and versatile deployment across diverse settings.

SIMPLE CONNECTIVITY:

Designed for effortless setup and seamless connection with various systems.

BEST IN CLASS ANTI-FOULING

Our unique combination of anti-fouling techniques include a small brush that rotates over the sensor to ensure cleanliness of the sensor surface for data accuracy over time.

EXTENDED CALIBRATION STABILITY:

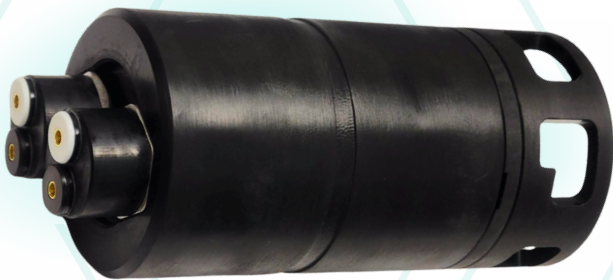
Maintains calibration with minimal drift for 18-24 months, ensuring long-term reliability.

ENERGY EFFICIENT:

Low power consumption for prolonged operational periods.

ROBUST PRECISION OVER TIME:

Combines durability and consistent accuracy, delivering exceptional long-term value.



Follow Us

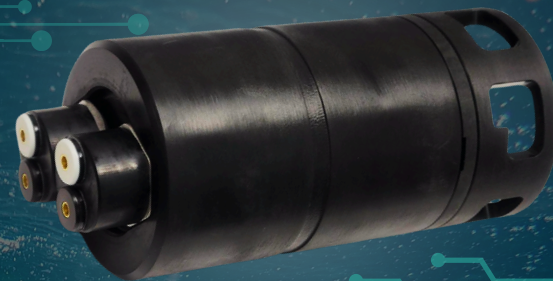


(760) 727-0300 • info@pme.com

1483 Poinsettia Ave. Suite 101, Vista, California, USA 92081



WWW.PME.COM



SUPPORTED MEASUREMENTS:

- Dissolved Oxygen
- Temperature

SPECIFICATIONS:

Dimensions	4" x 1.5"
Sensor Type	Optical
Calibrated Range	0 to 150% saturation
Oxygen Accuracy	$\pm 5\%$ of the measurement or ± 0.3 mg/L, whichever is larger
Oxygen Resolution	0.001 mg/L
Oxygen Response Time	Approximately 30 seconds
Temperature Resolution	1 millidegree C
Temperature Accuracy	± 0.1 degrees C
Temperature Range	0 to 35 degrees C
Temperature Resolution	1 millidegree C
Memory	Unlimited
Connectivity	Bristlemouth Connectors
Sampling Rate	Every 5 seconds or slower, or triggered by controller.
Sampling Current	25mA for 100ms
Max Depth	100 Meters
Power supply Voltage	Provided by Bristlemouth Connection



Follow Us



(760) 727-0300 • info@pme.com

1483 Poinsettia Ave. Suite 101, Vista, California, USA 92081